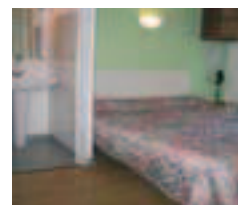


### **C** HÔTEL DES ARTS

58 **TSE** 69, boulevard Carnot – F - 13100 Aix-en-Provence - Tel. 33 (0)4 42 38 11 77 – Fax 33 (0)4 42 26 77 31  
A luxury hotel 5 minutes walk from the heart of the city.



## APART HOTELS

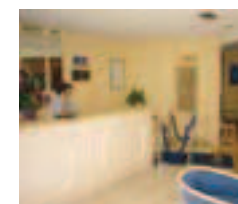
### ★★★★ **C** QUALITY HOTEL AND SUITES FLORIDIANES

47 24, boulevard Charrier – F - 13100 Aix-en-Provence - Tel. 33 (0)4 42 37 23 23 – Fax 33 (0)4 42 64 00 18  
Recently renovated holiday apartments situated in a quiet district 400m from the Cours Mirabeau. Outdoor pool..



### ★★★ **C** ADAGIO CITY APARTHOTEL

61 3-5, rue des Chartreux – F - 13100 Aix-en-Provence - Tel. 33 (0)4 42 37 98 98 – Fax 33 (0)4 42 37 98 99  
Elegant, right in the heart of the city, a peaceful location near to shops and entertainment



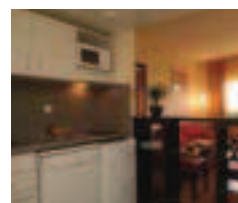
### ★★★ **C** APPART VALLEY

44 42, route de Galice – F - 13090 Aix-en-Provence - Tel. 33 (0)4 42 95 80 00 – Fax 33 (0)4 42 95 06 01  
20 minutes walk from the city centre and recently built. A friendly, quiet, comfortable space.



### ★★★ **C** ATRIUM D'ANAÏTE

45 15, cours Gambetta – F - 13100 Aix-en-Provence - Tel. 33 (0)4 42 99 16 00 – Fax 33 (0)4 42 96 63 44  
Recently reopened and completely renovated, its major asset is that the old town is right next door.



### ★★★ **C** BASTIDE DU ROI RENÉ CITÉA

43 31, avenue des Infirmeries – F - 13100 Aix-en-Provence - Tel. 33 (0)4 42 37 83 00 – Fax 33 (0)4 42 27 54 40  
Historic building: in 1472, King René had the Bastide built. It has since become a hotel residence with much character welcoming tourists and lovers of Aix-en-Provence.



### ★★★ **C** CITADINES JAS DE BOUFFAN

46 4, avenue Achille-Empéaire – F - 13090 Aix-en-Provence - Tel. 33 (0)8 25 010 356 – Fax 33 (0)4 42 20 22 46  
(fixe) depuis l'étranger : 04 42 52 56 00  
In the residential district of Jas de Bouffan, near to the Vasarely Foundation.



### ★★ **C** CITEA (PIERRE & VACANCES COMPANY)

55 42, route de Galice – 13090 Aix-en-Provence - Tel. 33 (0)4 42 29 66 00 - Fax 33 (0)4 42 29 66 01  
Apartments in a quiet district, 10 minutes from the city centre.

